

## Special Issue Article

# Early life stress, cortisol, frontolimbic connectivity, and depressive symptoms during puberty

Katharina Kircanski<sup>1\*</sup>, Lucinda M. Sisk<sup>2\*</sup>, Tiffany C. Ho<sup>2</sup>, Kathryn L. Humphreys<sup>3</sup>, Lucy S. King<sup>2</sup>, Natalie L. Colich<sup>4</sup>, Sarah J. Ordaz<sup>2</sup> and Ian H. Gotlib<sup>2</sup>

<sup>1</sup>Emotion and Development Branch, National Institute of Mental Health, Bethesda, MD, USA; <sup>2</sup>Department of Psychology, Stanford University, Stanford, CA, USA;

<sup>3</sup>Department of Psychology and Human Development, Vanderbilt University, Nashville, TN, USA and <sup>4</sup>Department of Psychology, University of Washington, Seattle, WA, USA

### Abstract

Early life stress (ELS) is a risk factor for the development of depression in adolescence; the mediating neurobiological mechanisms, however, are unknown. In this study, we examined in early pubertal youth the associations among ELS, cortisol stress responsivity, and white matter microstructure of the uncinate fasciculus and the fornix, two key frontolimbic tracts; we also tested whether and how these variables predicted depressive symptoms in later puberty. A total of 208 participants (117 females; *M* age = 11.37 years; *M* Tanner stage = 2.03) provided data across two or more assessment modalities: ELS; salivary cortisol levels during a psychosocial stress task; diffusion magnetic resonance imaging; and depressive symptoms. In early puberty there were significant associations between higher ELS and decreased cortisol production, and between decreased cortisol production and increased fractional anisotropy in the uncinate fasciculus. Further, increased fractional anisotropy in the uncinate fasciculus predicted higher depressive symptoms in later puberty, above and beyond earlier symptoms. In post hoc analyses, we found that sex moderated several additional associations. We discuss these findings within a broader conceptual model linking ELS, emotion dysregulation, and depression across the transition through puberty, and contend that brain circuits implicated in the control of hypothalamic–pituitary–adrenal axis function should be a focus of continued research.

**Keywords:** cortisol, depression, diffusion tensor imaging, emotion dysregulation, early life stress, puberty

(Received 19 November 2018; revised 1 March 2019; accepted 9 March 2019)

Adverse experiences in childhood can influence individuals' affective development. Indeed, early life stress (ELS) has been associated with various forms of emotion dysregulation (reviewed in Koss & Gunnar, 2018; Raymond, Marin, Majour, & Lupien, 2018)—affective experience and/or expression that hinders adaptive, goal-directed behavior (Beauchaine, 2015; Beauchaine & Gatzke-Kopp, 2012). It is not surprising, therefore, that ELS is a risk factor for the development of depression, a disorder characterized by emotion dysregulation, in adolescence (McLaughlin et al., 2012) and into adulthood (Green et al., 2010). A growing body of interdisciplinary research is investigating the ways in which ELS influences brain circuits implicated in the control of the hypothalamic–pituitary–adrenal (HPA) axis and in the generation and regulation of affect (reviewed in Lupien, McEwen, Gunnar, & Heim, 2009). It is clear from this research that a deeper understanding of ELS, emotion dysregulation, and risk for depression will require integration among different levels of analysis (e.g., genetic, endocrine, and neurobiological; Adrian,

Zeman, & Veits, 2011; Beauchaine, 2015; Doom & Gunnar, 2013). Moreover, given that the pubertal transition is characterized by both neuroendocrinological recalibration (DePasquale, Donzella, & Gunnar, in press; Quevedo, Johnson, Loman, Lafavor, & Gunnar, 2012) and an increased incidence of depressive symptoms (reviewed in Kessler, 2003), focusing on neurobiological and endocrine systems during the pubertal transition should help to elucidate ELS-related processes involved in emotion dysregulation. In the current study, we examined in early pubertal youth the associations among childhood stress exposure, HPA axis responses to social stress, and white matter microstructure of frontolimbic tracts that support emotion regulation. We also investigated whether and how individual differences at these levels of analysis in early puberty predict symptoms of depression in later puberty. In discussing our findings, we advance future directions focused on neurobiological mediation and moderation of the impact of ELS on emotion dysregulation and the development of psychopathology in large-scale samples.

Dysregulation of the HPA axis has been posited to be one mechanism that underlies the effects of ELS on emotion dysregulation broadly (reviewed in Doom & Gunnar, 2013; Messman-Moore & Bhuptani, 2017; Palacios-Barrios & Hanson, 2019) and depression specifically (reviewed in Koss & Gunnar, 2018; Raymond et al., 2018). The HPA axis coordinates hormonal stress responses, including the production of cortisol needed for energy mobilization (McEwen, 1998). Whereas activation of the HPA

**Author for correspondence:** Katharina Kircanski, Emotion and Development Branch, National Institute of Mental Health, 9000 Rockville Pike, Building 15K, MSC-2670, Bethesda, MD 20892-2670; E-mail: kircanskik@mail.nih.gov.

\*Authors Katharina Kircanski and Lucinda M. Sisk contributed equally to the article.

**Cite this article:** Kircanski K, Sisk LM, Ho TC, Humphreys KL, King LS, Colich NL, Ordaz SJ, Gotlib IH (2019). Early life stress, cortisol, frontolimbic connectivity, and depressive symptoms during puberty. *Development and Psychopathology* 31, 1011–1022. <https://doi.org/10.1017/S0954579419000555>

axis is normative in response to acute stressors, chronic or severe ELS has been associated with deviations in stress cortisol production that are likely dependent on developmental stage. For example, in a study of children ages 6 to 12 years, those with higher parent-reported life stress exhibited reduced cortisol levels in a lab-based assessment. Lower socioeconomic status in this sample was also associated with reduced cortisol production, but only in the older children, highlighting the importance of considering pubertal status in this research (Ursache, Noble, & Blair, 2015). In another study of 9- to 12-year-old youth, history of childhood maltreatment was associated with decreased cortisol reactivity to a lab-based social stressor (Trickett, Gordis, Peckins, & Susman, 2014). A recent meta-analysis indicated that higher ELS was related to reduced cortisol responses to stressors across development (Bunea, Szentágotai-Tátar, & Miu, 2017). ELS-related aberrant cortisol regulation, in turn, has been associated with emotion dysregulation in youth, including elevated negative affect and social withdrawal (e.g., Alink, Cicchetti, Kim, & Rogosch, 2012; Cicchetti, Rogosch, Gunnar, & Toth, 2010). The decreased cortisol pattern linked to ELS parallels findings in adolescents with higher depressive symptoms (e.g., Morris, Kouros, Meilock, & Rao, 2017). Harkness, Stewart, and Wynne-Edwards (2011) reported that a history of maltreatment interacted with subsequent high levels of depressive symptoms to predict decreased cortisol responses to a psychosocial stressor in adolescents. The evidence is not fully consistent, however, and several studies reported elevated stress cortisol production as a function of ELS and depressive symptoms (e.g., Rao, Hammen, Ortiz, Chen, & Poland, 2008). Given the mixed literature, further research is needed examining the associations among ELS, stress cortisol, and depression (reviewed in Koss & Gunnar, 2018). Our research group recently examined the diurnal cortisol awakening response (CAR), postulated to be an index of diurnal cortisol reactivity (Powell & Schlotz, 2012). We found that whereas in later puberty, higher ELS was associated with a heightened CAR, in earlier puberty, higher ELS was associated with a *reduced* CAR (King et al., 2017).

In the context of understanding the pathways through which ELS and stress cortisol influence risk for disorders characterized by emotion dysregulation, such as depression, integrating a brain circuit level of analysis may yield additional insight, particularly during the period of adolescence that is a window of development notable for neuroendocrine changes, brain circuit maturation, and the formation of adaptive emotion regulatory behaviors (Dahl, 2001; Furhmann, Knoll, & Blakemore, 2015). According to the life cycle model of stress formulated by Lupien et al. (2009), different disorders emerge in an individual as a function of stress timing; therefore, we expect that the ways in which ELS influences HPA axis function and the brain circuits that support cortisol and affective regulation are distinct during the pubertal transition, compared to other developmental stages. Indeed, the hippocampus, prefrontal cortex, and amygdala contain glucocorticoid receptors that modulate ongoing HPA axis activation (reviewed in McEwen & Milner, 2007; Raymond et al., 2018).

One influential theory postulates that chronic activation of the HPA axis involving sustained cortisol release, such as in response to ELS, ultimately serves to downregulate HPA axis activity through neuroendocrine feedback loops (Fries, Hesse, Hellhammer, & Hellhammer, 2005; McEwen, 1998). Several studies have assessed the relation of ELS to morphological structure, including regional gray matter volumes and white matter connections of the hippocampus, prefrontal cortex, and amygdala (e.g., Dannlowski et al., 2012; Hanson et al., 2013; Hanson, Knodt,

Brigidu, & Hariri, 2015; Hanson, Nacewicz, et al., 2015). In this context, most investigators have used an extreme-groups design and have found that youth with significant maltreatment exhibit smaller hippocampal and prefrontal cortex volumes and reduced fractional anisotropy (FA), a proxy of white matter integrity, in frontolimbic tracts such as the uncinate fasciculus (UF), relative to youth without maltreatment (reviewed in Teicher, Samson, Anderson, & Ohashi, 2016). As the major white matter tract that connects the amygdala to prefrontal cortex, the UF is implicated in stress responding (Olson, Von der Heide, Alm, & Vyas, 2015). Moreover, the UF undergoes protracted maturation into adulthood and, thus, may be particularly susceptible to the neurobiological effects of ELS, including altered cortisol production. It is not surprising, therefore, that adolescent depression has been related to aberrant FA in the UF, although the direction of this association is mixed (Aghajani et al., 2014; Lewinn et al., 2014; see also Bracht, Linden, & Keedwell, 2015). Researchers have also identified alterations in the fornix, the primary output tract of the hippocampus that subserves intralimbic connections, in studies examining the effects of ELS. Specifically, two studies of children or young adults reported reduced FA in the fornix in relation to ELS (Choi, Jeong, Rohan, Polcari, & Teicher, 2009; Eluvathingal, 2006). Only one study to date, conducted in 6-year-old girls, included assessments of both cortisol stress reactivity and white matter microstructure. In that study, greater cortisol reactivity was associated with reduced FA in several tracts, but this negative association was attenuated in girls with parents who had more positive parent affect (Sheikh et al., 2014). Despite the limited integrative research in this area, based on the reviewed studies examining stress cortisol or white matter microstructure in youth who have been exposed to more extreme adversity or maltreatment, we hypothesized that greater severity of ELS and, by proxy, decreased stress cortisol would be associated with lower FA in frontolimbic white matter tracts including the UF and the fornix (Huang, Gundapuneedi, & Rao, 2012).

Finally, it is important to consider pubertal status and sex when examining the relations among ELS, stress cortisol, white matter microstructure, and depressive symptoms. The pubertal recalibration hypothesis (DePasquale et al., in press; Romeo, 2010; Romeo & McEwen, 2006) posits that the significant neuroendocrine changes that occur during puberty undergird a second sensitive period of development for stress-mediating systems, including the HPA axis. Consequently, the pubertal transition is an important period for researchers to study in order to gain a better understanding of how ELS may affect the development of the HPA axis and related brain circuits in ways that affect adaptive emotion regulation and contribute to depressive symptoms. With respect to pubertal status, as noted above, we previously found that puberty moderated the association between ELS and the cortisol awakening response (King et al., 2017). In the same data set, we documented in early pubertal youth that subjective sensitivity to ELS (i.e., the within-person discrepancy between subjective vs. objective stress metrics) was associated with both reduced FA in the UF and higher concurrent anxiety symptoms (Ho et al., 2017). Although there were no significant effects of sex on FA in these analyses, other studies have reported sexual dimorphism in FA (Lebel et al., 2012; Olson et al., 2015), and sex influences HPA axis activation to stress (Ordaz & Luna, 2012). Finally, in an independent sample of female youth, we found that stage of pubertal development moderated the associations between stress cortisol reactivity and likelihood of the future onset of depression, such that cortisol hyperreactivity predicted depression in later

puberty, but cortisol *hyporeactivity* predicted depression in earlier puberty (Colich, Kircanski, Foland-Ross, & Gotlib, 2015). With respect to sex, it is well established that the pubertal transition marks the beginning of a greater increase in the incidence of depression in females than in males, which likely involves a complex interaction of biological and environmental factors (Kessler, 2003; Kwong et al., *in press*).

In the current study, we aimed to build on previous research by conducting an integrative examination of childhood stress exposure, the cortisol stress response, white matter microstructure of the UF and the fornix, and depressive symptoms in youth. Participants were recruited from the community in order to focus on normative variations in ELS. First, we examined associations among these psychobiological constructs in early puberty. We focused analyses on early puberty and accounted for individual differences in precise pubertal staging. We hypothesized that higher ELS, a decreased cortisol stress response, and reduced FA in the UF and the fornix would be significantly interrelated in early puberty. Second, we tested whether and how these domains of analysis in early puberty predicted symptoms of depression in later puberty. We predicted that a decreased cortisol stress response and reduced FA in frontolimbic tracts would, in turn, predict an increase in depressive symptoms in later puberty, above and beyond symptoms in earlier puberty. While we did not make specific predictions by sex given the nascent literature on this topic, we tested sex *post hoc* as an exploratory moderator of effects. Given well-documented sex differences in pubertal timing (Negri & Susman, 2011), we matched males and females on pubertal status.

## Method

### Participants

Participants were native English speakers, recruited from the San Francisco Bay Area through posted flyers and online advertisements for a longitudinal study of adolescent brain development (see Colich et al., 2017; King et al., 2017, for additional details on participant recruitment). A total of 208 participants (117 females;  $M$  age = 11.37 years,  $SD$  = 1.04 years;  $M$  Tanner stage = 2.03,  $SD$  = 0.73) provided data for the current analyses. At the early puberty assessment, 201 participants provided ELS data, and 93 participants were randomly selected to complete a modified Trier Social Stress Test (TSST; Kirschbaum, Pirke, & Hellhammer, 1993) and provided stress cortisol data (51 females;  $M$  age = 11.45 years,  $SD$  = 1.08 years). In the broader longitudinal study, we randomly split the sample in half to complete the TSST at early puberty versus later puberty; this enabled us to assess stress cortisol production in TSST-naïve youth while retaining the ability to compare stress cortisol at early versus later puberty between subjects. Thus, consistent with the focus of the present study on psychobiology in early puberty, all participants in the current analyses completed the TSST at early puberty. Of the 187 participants who attempted a scan session, 129 participants had usable (i.e., below our motion threshold cutoffs) diffusion magnetic resonance imaging (dMRI) data for either the UF or the fornix (76 females;  $M$  age = 11.35 years,  $SD$  = 1.10 years); 66 participants had both stress cortisol and any dMRI data. Participants with versus without stress cortisol or dMRI data did not significantly differ on any other variables of interest (all  $|t|$ s  $\leq 1.94$ , all  $ps \geq .05$ ). Finally, we obtained depressive symptom data from 205 participants at early puberty (115 females;  $M$  age = 11.38 years,  $SD$  = 1.04 years) and from 154 participants approximately 2 years later, in later puberty

(84 females;  $M$  age = 13.36 years,  $SD$  = 1.04 years;  $M$  assessment interval = 23.01 months,  $SD$  = 3.58 months).

Potential participants were excluded from the study if they had contraindications to MRI scanning (e.g., metal implants or braces), had a history of neurological disorder or significant medical illness, had cognitive or physical challenges that impeded their ability to complete or understand the study procedures, or were not fluent in English. Females were excluded from the study if they had already experienced menarche, due to the focus of the larger study on the effects of ELS on neurodevelopment across the pubertal transition; thus, males and females were matched for self-reported pubertal stage at study inclusion. The study was approved by the Stanford University Institutional Review Board. In accordance with the Declaration of Helsinki, participants provided informed assent and a parent or legal guardian provided informed consent.

## Measures

### Early life stress

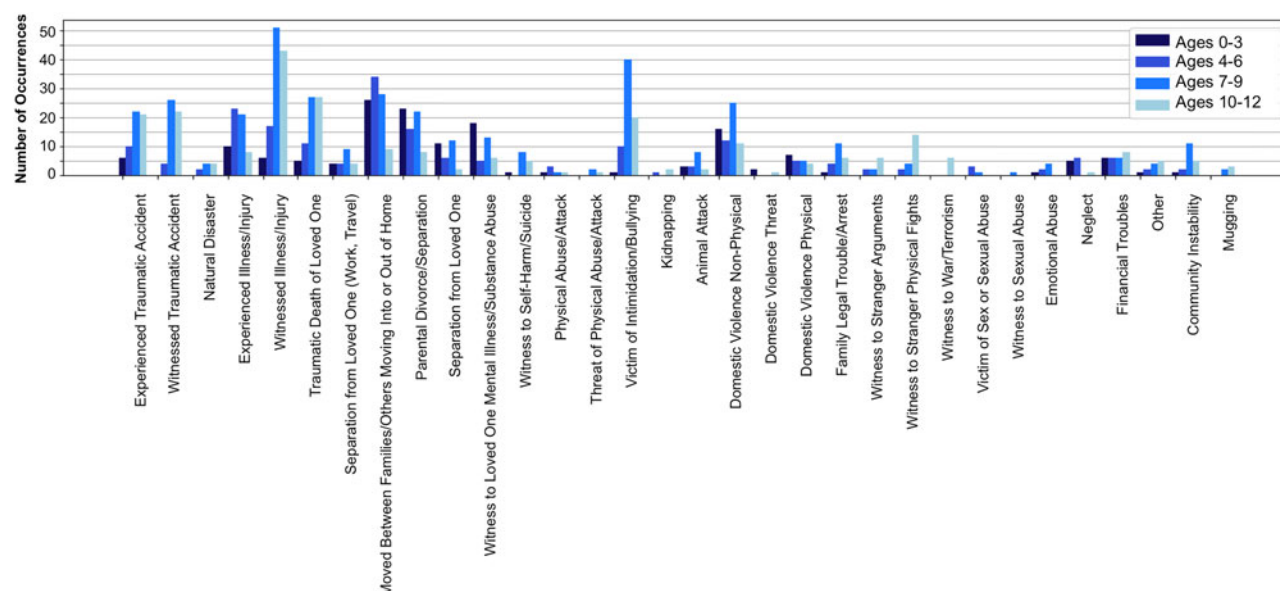
Participants were interviewed by trained research personnel about their history of exposure to more than 30 different types of stressors, using a version of the Traumatic Events Screening Inventory for Children (Ribbe, 1996). Each type of stress exposure endorsed by the participant prompted follow-up questions to obtain a deep characterization of the experience. For example, participants were asked, "Have you ever been in a really bad accident, like a car accident, a fall, or a fire?" If participants endorsed this item, follow-up questions included, "When this happened, were you really hurt? Was someone else really hurt or even killed?" Subsequently, a panel of three trained coders, who were not provided with any information relating to the participant's subjective experience of each event, rated the objective severity of each event based on the information obtained at the interview, using a modified version of the UCLA Life Stress Interview coding system (Rudolph et al., 2000). Specifically, coders rated each event on a 5-point scale using half-point increments (0 = *nonevent or no impact* [e.g., witnessed debris from car crash]; 4 = *extremely severe impact* [e.g., sexually abused]; intraclass correlation = .99). The maximum panel-rated severity ratings for each type of stressor were summed to obtain a total ELS score for each participant, representing cumulative stress exposure (King et al., 2017). ELS scores ranged from 0.5 to 30 across the sample. Figure 1 presents descriptive information on stressor endorsement as a function of the nature of the stressor and the age at which it was endorsed as having occurred.

### Stage of pubertal development

Pubertal stage was determined using self-report Tanner Staging (Marshall & Tanner 1968). Participants reported developmental stage by selecting the depiction most accurate to their own development from a schematic drawing of two secondary sex characteristics (pubic hair and breast/testes development) on a scale of 1 to 5, a method that has been documented to have strong associations with physicians' physical examinations of pubertal development (Coleman & Coleman 2002; Shirtcliff, Dahl, & Pollak, 2009). Our measure of pubertal stage was the average of the pubic and breast/testes scores, consistent with study inclusion criteria (Colich et al., 2017; King et al., 2017).

### Depressive symptoms

Participants completed the 10-item version of the Children's Depression Inventory (CDI-S; Kovacs, 1992), a self-report



**Figure 1.** Descriptive information on stressor endorsement as a function of the nature of the stressor and the age at which it was endorsed as having occurred ( $N = 201$ ).

measure of depressive symptoms designed for youth ages 8 to 17 years. Responses capture symptoms during the past 2 weeks. Studies have reported high validity and reliability of this measure (Kovacs, 1985, 1992). In the current sample, internal consistency of the CDI-S was acceptable at both early puberty ( $\alpha = 0.74$ ) and later puberty ( $\alpha = 0.75$ ).

### Procedures

In early puberty, participants completed two separate sessions, the first comprising the interview-based and self-report measures, and the second comprising the scan session followed by the stress cortisol assessment. For participants who opted out of the scan session, stress cortisol sessions were completed after the interview session. In later puberty, participants again completed the measure of depressive symptoms.

### Stress cortisol assessment

#### TSST

Participants completed a modified TSST (Kirschbaum et al., 1993) in which salivary cortisol levels were sampled repeatedly. Participants were brought into a quiet room by an experimenter and instructed to relax for 5 min; saliva samples were collected both before and after this period (i.e., Samples 1 and 2). During the next phase, the experimenter began a story and instructed participants to think of an exciting end to the story over the next 5 min. Participants were informed that an impartial judge would evaluate their story ending on content and memorization. Participants prepared and delivered the story ending to a judge who was trained to appear neutral and took notes on the presentation. After 5 min, the judge instructed participants to complete a serial subtraction task aloud under observation for an additional 5 min. The judge took notes and interrupted participants when they made a mistake, instructing them to start over. A saliva sample was collected at the end of this interval (i.e., Sample 3, 15 min from the second baseline sample or stressor onset). Participants

then watched a neutral video clip for two 15-min intervals, after each of which an additional saliva sample was collected (i.e., Samples 4 and 5, 30 and 45 min from the stressor onset).

### Sample assay and data reduction

All saliva samples were collected using SalivaBio Children's Swabs (Salimetrics, LLC). Samples were stored in a  $-20^{\circ}\text{C}$  freezer in the Stanford University Department of Psychology after the conclusion of the TSST. Samples were assayed utilizing a high-sensitivity ( $0.004\text{ }\mu\text{g/dL}$ ) immunoassay kit from Immuno-Biological Laboratories Inc. (Hamburg, Germany; intra- and interassay coefficients of variation range = 3%–5%). Samples were assayed together in large batches to control for interassay error.

Consistent with field recommendations (Stalder et al., 2016) and our prior work (e.g., King et al., 2017), cortisol values for each of the time points that were  $>2\text{ SD}$  above the mean value of the sample for that time point were winsorized. A total of 16 (3.4%) cortisol values were winsorized. Area under the curve (AUC) methods were used to calculate participants' total stress cortisol production. Calculations used each participant's precise cortisol value at each time point and the precise interval (number of minutes) between each pair of time points (Pruessner, Kirschbaum, Meintschmid, & Hellhammer, 2003). Based on our previous work (e.g., Colich et al., 2015), predictions, and descriptive data concerning cortisol production in the sample as a whole (see Table 1 and Figure 2), AUC values were calculated for baseline-to-peak stress reactivity ( $\text{AUC}_{\text{pre-peak}}$ ; i.e., from Samples 2 to 4) and post-peak stress recovery, during which average cortisol levels returned to baseline ( $\text{AUC}_{\text{post-peak}}$ ; i.e., from Samples 4 to 5).

### dMRI

#### MRI scan acquisition

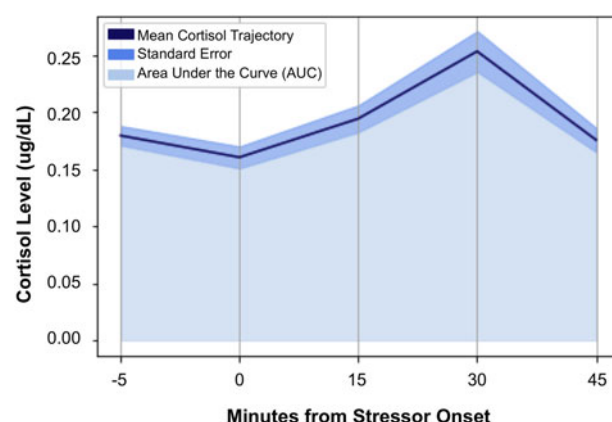
MRI scans were acquired at the Center for Cognitive and Neurobiological Imaging at Stanford University using a 3T Discovery MR750 (GE Medical Systems, Milwaukee, WI)



**Table 1.** Sample demographic, neuroendocrine, and clinical characteristics

	M (SD) or N (%)
Sex (female)	117 (56.3%)
Age (years)	
Early puberty assessment	11.37 (1.04)
Later puberty assessment	13.36 (1.04)
Pubertal stage	
Early puberty assessment	2.03 (0.73)
Later puberty assessment	3.27 (1.02)
ELS severity <sup>a</sup>	6.53 (5.28)
Race/ethnicity <sup>b</sup>	
Non-Hispanic White	98 (47.1%)
Black	17 (8.2%)
Hispanic/Latino	22 (10.6%)
Asian	26 (12.5%)
Other	44 (36.1%)
Family income <sup>c</sup>	
\$0,000–\$50,000	31 (14.9%)
\$50,001–\$75,000	19 (9.1%)
\$75,001–\$100,000	21 (10.1%)
\$100,001–\$150,000	49 (23.6%)
\$150,001+	69 (33.2%)
Parental education <sup>d</sup>	
<4-year college degree	75 (14.9%)
4-year college degree	68 (32.7%)
Graduate degree	47 (22.6%)
Stress cortisol level <sup>e</sup>	
Baseline (Sample 1)	0.18 (0.08)
Baseline (Sample 2)	0.16 (0.09)
15 min after stressor onset (Sample 3)	0.20 (0.11)
30 min after stressor onset (Sample 4)	0.25 (0.17)
45 min after stressor onset (Sample 5)	0.17 (0.10)
FA <sup>f</sup>	
Left UF	0.46 (0.03)
Right UF	0.46 (0.03)
Left fornix	0.27 (0.03)
Right fornix	0.28 (0.03)
CDI-S score <sup>g</sup>	
Early puberty	2.20 (2.39)
Later puberty	2.38 (2.67)

Note: CDI-S, Children's Depression Inventory—Short Form. ELS, early life stress. FA, fractional anisotropy. UF, uncinate fasciculus. <sup>a</sup>Data were available for 201 participants. <sup>b</sup>One participant did not complete the measures or declined to provide information. <sup>c</sup>Nineteen participants did not complete the measures or declined to provide information. <sup>d</sup>Eighteen participants did not complete the measures or declined to provide information. <sup>e</sup>Data were available for 94 participants. One participant did not have sample times collected; therefore, AUCg data could not be computed. <sup>f</sup>Data were available for 106 (left UF), 113 (right UF), 82 (left fornix), and 82 (right fornix) participants. <sup>g</sup>Data were available for 205 (early puberty) and 154 (later puberty) participants.

**Figure 2.** Average cortisol levels at each of the five collection time points, designated by minutes from stressor onset ( $N = 93$ ).

equipped with a 32-channel head coil (Nova Medical). We acquired a high-resolution T1-weighted (T1w) anatomical scan in order to register the dMRI data using an SPGR sequence (repetition time = 6.24 ms, echo time = 2.34 ms, inversion time = 450 ms, flip angle = 12 degrees, sagittal slices = 0.9 mm isotropic voxels). Diffusion MRI was acquired to characterize white matter tracts of interest using an echo-planar imaging sequence (repetition time = 8500 ms, echo time = 93.5 ms, 64 axial slices, 2 mm isotropic voxels, 60  $b = 2000$  diffusion-weighted directions, 6  $b = 0$  acquisitions at the beginning of the scan).

#### dMRI preprocessing

As previously described (Ho et al., 2017), dicoms from the dMRI and T1w SPGR sequences were reconstructed into four-dimensional NIFTI format. Anatomical landmarks were manually defined in the anterior commissure and posterior commissure (AC-PC) and midsagittal plane of the T1w NIFTI, to guide a rigid-body transformation that converted the images into AC-PC aligned space. Participant motion in the diffusion-weighted images was corrected using nonlinear coregistration. Each diffusion-weighted image was registered to the mean of the six motion-corrected non-diffusion-weighted ( $b = 0$ ) images. The mean of the six  $b = 0$  images was then aligned to the T1w image in AC-PC space using a rigid body three-dimensional (3D) motion correction (6 parameters) with a constrained nonlinear warping (8 parameters) based upon a model of expected distortions from the eddy-current (Rohde, Barnett, Basser, Marengo, & Pierpaoli, 2004). Raw diffusion images were resampled to 2 mm isotropic voxels by combining anatomical alignment and motion correction into one transformation, and then resampling the data using a seventh-order b-spline algorithm. All preprocessing steps were performed using the open-source suite of tools developed by the VISTA Lab (<https://github.com/vistalab/vistasoft>).

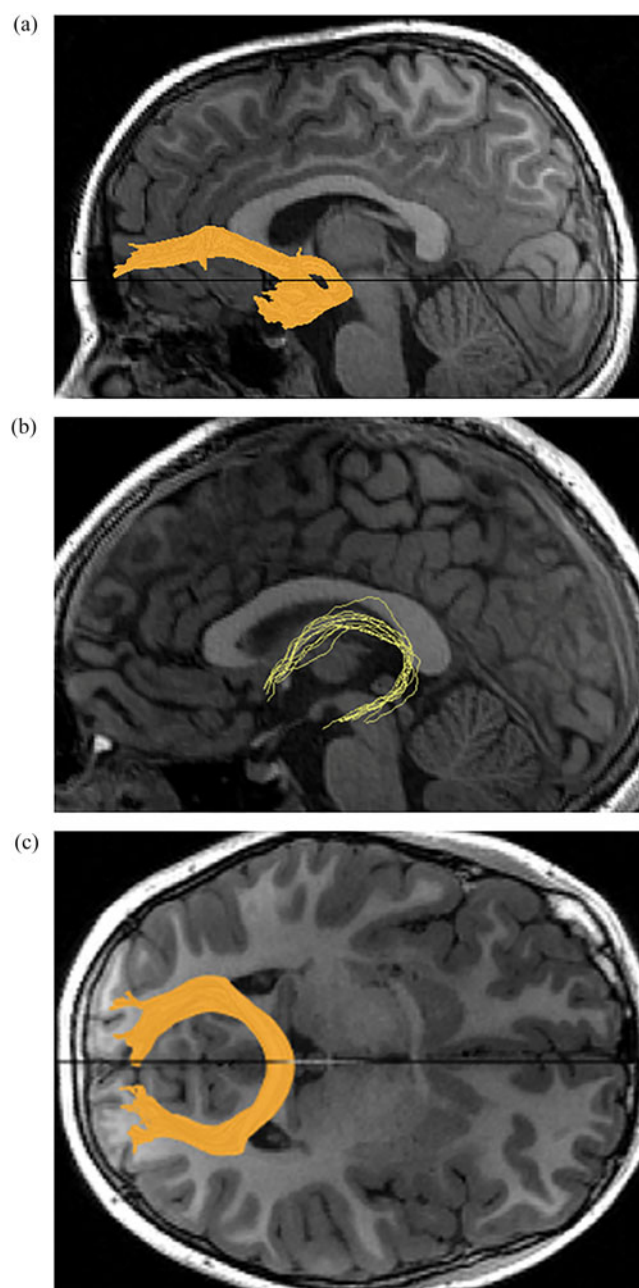
#### Tractography of UF and control tract

To compute mean FA of left and right UF, we used Automatic Fiber Quantification (AFQ), an open-source program (Yeatman, Dougherty, Myall, Wandell, & Feldman, 2012; <https://github.com/jyeatman/AFQ>). We also used AFQ to compute mean FA of the corpus callosum major as a control tract. Fiber tracking was performed across the whole brain on AC-PC aligned tensor

maps as has been previously described (Ho et al., 2017). Tracts were estimated by employing a deterministic streamlines tracking algorithm (Basser, Pajevic, Pierpaoli, Duda, & Aldroubi, 2000; Conturo et al., 1999) with a fourth-order Runge–Kutta path integration method and 1 mm fixed-step size. A continuous tensor field with trilinear interpolation was estimated for tensor events. Seeds used for tractography were selected from a 1 mm 3D grid, which spanned the whole brain mask for voxels with  $FA > 0.3$ . Fiber tracing proceeded until  $FA$  decreased to  $< 0.15$ , or until the minimum angle measured between current and previous path segments was  $> 30$  degrees. Streamlines were traced from the initial seed voxel in both directions along the principle axis of diffusion. Fibers that passed through the two planar regions of interest (ROIs), one located in the temporal lobe and one in the frontal lobe, became candidates for the UF fiber group or corpus callosum major fiber group. These waypoint ROIs were based on the ICBM-DTI81 and transformed linearly to each participant's brain using previously published protocols (Zhang, Olivi, Hertig, van Zijl, & Mori, 2008). Each candidate fiber was scored based on its similarity to a standardized fiber tract probability map using previously published procedures (Hua et al., 2008). Specifically, data from each participant were transformed to the JHU-DTI template (<http://lbam.jhmi.edu>) and compared to the probabilistic Mori group atlas (Wakana, Jiang, & van Zijl, 2004) using trilinear interpolation. The mean score for all five points for each UF or corpus callosum major tract candidate fiber was computed. All streamline fibers with a score of 0 were discarded. All streamlines were cleaned using a statistical outlier rejection algorithm, which represents the tract as a 3D Gaussian and estimated fibers within a maximum Gaussian distance of 5. Fibers that deviated more than 4  $SD$  from the core (mean) center of the tract were discarded. This process was repeated until all fiber outliers were removed. All remaining fibers were then visually inspected, and fibers that did not fit the tract profile were clipped or removed. Participants for whom tracts did not adequately resolve were conservatively excluded ( $N = 21$ ). For additional information on AFQ, see <https://github.com/jyeatman/AFQ>. For further details, see Ho et al. (2017).

#### Tractography of the fornix

The anterior fibers of the fornix terminate in the nucleus accumbens. Thus, hippocampal and nucleus accumbens ROIs were defined by processing each subject's AC-PC aligned T1w image through FreeSurfer (version 5.3), an automated segmentation and parcellation software suite (Fischl et al., 2004), using parcellations based on the Destrieux atlas (Destrieux, Fischl, Dale, & Halgren, 2010). The white-matter segmentation generated by FreeSurfer was used to create a binary white-matter mask. Fiber tracking was performed between the hippocampal and nucleus accumbens ROIs obtained from FreeSurfer segmentations using constrained spherical deconvolution-based probabilistic tracking, as implemented in MRtrix software (version 0.2.12; Tournier, Calamante, & Connelly, 2007). This method has been previously described (Leong, MacNiven, Samanez-Larkin, & Knutson, 2018; Leong, Pestilli, Wu, Samanez-Larkin, & Knutson, 2016). The maximum number of harmonics was 4 ( $L_{\max} = 4$ ), and this defined the maximum deconvolutions kernel number, utilized by constrained spherical deconvolution, a method of estimating the distribution of fiber orientations within each voxel. We fit the function using 16 parameters, and generated fiber pathways by randomly seeding the starting ROI and tracking until the fiber reached the destination ROI. Fibers that left the white-matter mask were terminated and discarded.



**Figure 3.** Visualization of the (a) uncinate fasciculus, (b) fornix, and (c) corpus callosum major from a representative subject.

Fibers obtained using this method were reduced to core fiber bundles by removing any outliers and anatomically unlikely pathways (such as fibers passing through lateral ventricles). Specifically, fibers more than 2  $SD$  higher or lower than the mean fiber length were removed. Then, fibers greater than 3  $SD$  from the mean spatial location of the core fiber (Mahalanobis distance) were removed. Finally, we visually inspected the final tracts and excluded those with inaccurate or poorly resolved fiber bundles ( $N = 46$ ). For further details, see Leong et al. (2016, 2018). For visualization of tracts from a representative participant, see Figure 3.

#### Data analysis

Statistical analyses were conducted in R (version 3.5.1; R Core Team, 2017). All tests were two-tailed,  $\alpha = 0.05$ .

### Associations among ELS, stress cortisol, and FA in early puberty

We conducted a set of linear regression models to examine the associations among ELS, the cortisol stress response, and FA of the UF and the fornix in early puberty. We tested the hypothesis that higher ELS would predict decreased cortisol production (separate models for pre-peak and post-peak) and reduced FA in the UF and the fornix (example model for  $AUC_{g_{post-peak}}$ ):

$$AUC_{g_{post-peak}} = \beta_0 + \beta_{ELS} + \beta_{pubertal\ stage} + \beta_{baseline\ cortisol}$$

Based on our findings (described below), we next tested the hypothesis that decreased cortisol production post-peak would be related to reduced FA in the UF and the fornix (example model for  $FA_{left\ UF}$ ):

$$FA_{left\ UF} = \beta_0 + \beta_{AUC_{g_{post-peak}}} + \beta_{pubertal\ stage} + \beta_{baseline\ cortisol} + \beta_{cranial\ volume}$$

As denoted above, all analyses included pubertal stage as a covariate. In addition, all analyses of stress cortisol production included participants' baseline cortisol level (Sample 2) as a covariate to ensure that effects were specific to stress cortisol. ELS did not significantly predict baseline cortisol level (Sample 2),  $t(87) = -0.71$ ,  $p = .479$ . All analyses of FA included cranial volume as a covariate (Olson et al., 2015). ELS did not significantly predict cranial volume,  $t(174) = -0.08$ ,  $p = .938$ . Follow-up analyses examined sex as an exploratory moderator of these associations.

### ELS, stress cortisol, and FA in early puberty as predictors of depressive symptoms in later puberty

We conducted a set of linear regression models to test the hypothesis that a decreased cortisol stress response and reduced FA in the UF and the fornix would predict higher depressive symptoms in later puberty. Because distinct subsamples of participants completed the stress cortisol and dMRI assessments, these predictors were analyzed separately (example model for  $AUC_{g_{post-peak}}$ ):

$$CDI_{later\ puberty} = \beta_0 + \beta_{AUC_{g_{post-peak}}} + \beta_{pubertal\ stage} + \beta_{baseline\ cortisol} + \beta_{CDI(early\ puberty)}$$

As denoted above, all analyses included pubertal stage as a covariate, all analyses of stress cortisol production included baseline cortisol level as a covariate, and all analyses of FA included cranial volume as a covariate. In addition, all analyses included CDI scores in early puberty as a covariate, such that we examined the predictive effects at later puberty above and beyond any symptoms at baseline. Follow-up analyses examined sex as an exploratory moderator of these associations.

### Sensitivity analyses

Finally, to examine the specificity of the findings to FA in the tracts of interest, we conducted several linear regression models, parallel to the primary analyses above, replacing FA in the tracts of interest with FA in the corpus callosum major. In addition, we conducted several follow-up analyses, also parallel to the primary analyses above, which included alternate covariates or nonwinsorized stress cortisol values.

## Results

### Participant characteristics

Table 1 presents a summary of demographic, neurobiological, and clinical characteristics across the full sample. Older age was associated with higher  $AUC_{g_{post-peak}}$  ( $r = .25$ ,  $p = .018$ ); this association was no longer significant, however, after partialing pubertal stage ( $r_{partial} = .18$ ,  $p = .081$ ). Neither age nor sex was significantly related to any other variables of interest (all  $|r|s \leq .20$ , all  $ps \geq .058$ ); therefore, age and sex were not included in the *a priori* analyses.

### Associations among ELS, stress cortisol, and FA in early puberty ELS and stress cortisol

As hypothesized, higher ELS predicted decreased cortisol production during the final phase of the task, following the peak of average stress cortisol levels ( $AUC_{g_{post-peak}}$ :  $B = -0.094$ ,  $SE = 0.047$ ,  $t(85) = -2.01$ ,  $p = .048$ ) (see Figure 4a). Contrary to predictions, however, ELS did not significantly predict cortisol production during baseline-to-peak stress reactivity ( $AUC_{g_{pre-peak}}$ :  $B = -0.118$ ,  $SE = 0.061$ ,  $t(85) = -1.93$ ,  $p = .057$ ). Therefore, we restricted subsequent analyses of stress cortisol to the post-peak period.

### ELS and FA

Contrary to predictions, ELS did not significantly predict FA in either the UF ( $FA_{left\ UF}$ :  $B = 0.0004$ ,  $SE = 0.0007$ ,  $t(96) = 0.50$ ,  $p = .619$ ;  $FA_{right\ UF}$ :  $B = 0.0004$ ,  $SE = 0.0006$ ,  $t(102) = 0.64$ ,  $p = .524$ ), or the fornix ( $FA_{left\ fornix}$ :  $B = 0.0006$ ,  $SE = 0.0008$ ,  $t(74) = 0.84$ ,  $p = .403$ ;  $FA_{right\ fornix}$ :  $B = -0.0001$ ,  $SE = 0.0009$ ,  $t(74) = -0.15$ ,  $p = .879$ ).

### Stress cortisol and FA

Decreased cortisol production post-peak was associated with increased FA in both the left UF ( $FA_{left\ UF}$ :  $B = -0.0050$ ,  $SE = 0.0023$ ,  $t(47) = -2.13$ ,  $p = .039$ ), and the right UF ( $FA_{right\ UF}$ :  $B = -0.0050$ ,  $SE = 0.0018$ ,  $t(52) = -2.83$ ,  $p = .007$ ) (Figure 4b). Cortisol production post-peak was not associated with FA in the fornix ( $FA_{left\ fornix}$ :  $B = -0.0001$ ,  $SE = 0.0017$ ,  $t(47) = -0.08$ ,  $p = .938$ ;  $FA_{right\ fornix}$ :  $B = -0.0032$ ,  $SE = 0.0024$ ,  $t(47) = -1.32$ ,  $p = .194$ ).

### Moderation by sex

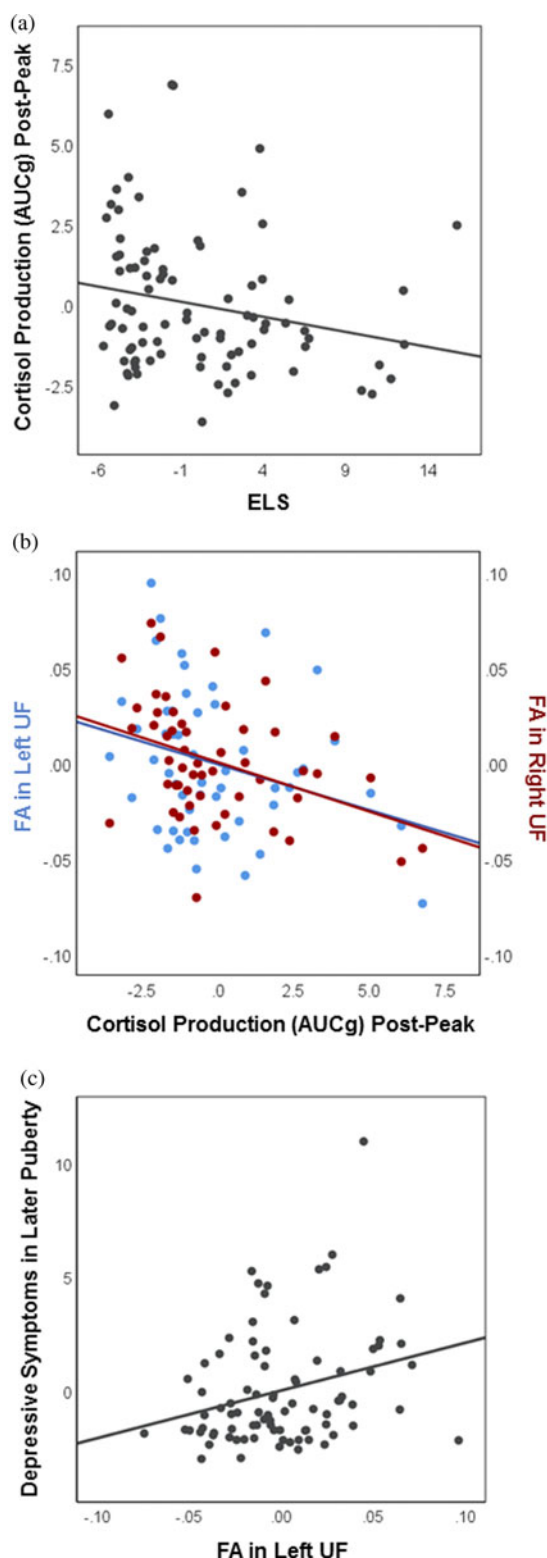
Follow-up exploratory analyses indicated several significant interactions with sex ( $ps \leq .05$ ) all of which involved FA. Examinations of simple slopes indicated that, for boys only, higher ELS predicted increased FA in both the left UF ( $FA_{left\ UF}$  simple slope:  $B_{boys} = 0.0026$ ,  $SE = 0.0011$ ,  $t(94) = 2.47$ ,  $p = .015$ ), and the left fornix ( $FA_{left\ fornix}$  simple slope:  $B_{boys} = 0.0023$ ,  $SE = 0.0011$ ,  $t(72) = 2.11$ ,  $p = .039$ ). For boys only, decreased cortisol production post-peak was associated with marginally increased FA in the left fornix ( $FA_{left\ fornix}$  simple slope:  $B_{boys} = -0.0068$ ,  $SE = 0.0039$ ,  $t(45) = -1.74$ ,  $p = .088$ ). No other interaction effects were significant (all  $|t|s \leq 1.56$ , all  $ps \geq .123$ ).

### ELS, stress cortisol, and FA in early puberty as predictors of depressive symptoms in later puberty

#### Baseline relations

Higher ELS was associated with higher depressive symptoms in early puberty ( $CDI_{early\ puberty}$ :  $B = 0.101$ ,  $SE = 0.032$ ,  $t(195) = 3.19$ ,  $p = .002$ ), but did not predict level of depressive symptoms in later puberty above and beyond the prior symptoms ( $CDI_{later}$





**Figure 4.** Selected associations among early life stress, stress cortisol production, white matter integrity, and depressive symptoms. Partial regression plots depict associations between the unstandardized residuals (i.e., variables residualized for all other predictors in the linear regression models). (a) In early puberty, higher early life stress predicts decreased cortisol production during the final phase of the task, post-peak ( $N = 93$ ;  $p = .048$ ). (b) In early puberty, decreased cortisol production post-peak predicts increased fractional anisotropy in both the left ( $N = 52$ ;  $p = .039$ ) and the right ( $N = 57$ ;  $p = .007$ ) uncinate fasciculus. (c) Increased fractional anisotropy in the left uncinate fasciculus in early puberty predicts higher depressive symptoms in later puberty ( $N = 85$ ;  $p = .012$ ).

puberty:  $B = 0.049$ ,  $SE = 0.047$ ,  $t(142) = 1.03$ ,  $p = .306$ ). Neither stress cortisol production nor FA in any tract of interest was related to depressive symptoms in early puberty (all  $|t|s \leq 1.13$ , all  $ps \geq .260$ ).

#### *Stress cortisol predicting depressive symptoms*

Contrary to predictions, cortisol production post-peak in early puberty did not predict depressive symptoms in later puberty ( $CDI_{\text{later puberty}}: B = -0.004$ ,  $SE = 0.016$ ,  $t(67) = -0.02$ ,  $p = .981$ ).

#### *FA predicting depressive symptoms*

Increased FA in the left UF in early puberty predicted higher depressive symptoms in later puberty ( $CDI_{\text{later puberty}}: B = 20.901$ ,  $SE = 8.138$ ,  $t(80) = 2.57$ ,  $p = .012$ ) (Figure 4c). In addition, reduced FA in the right fornix in early puberty predicted higher depressive symptoms in later puberty ( $CDI_{\text{later puberty}}: B = -24.374$ ,  $SE = 11.289$ ,  $t(63) = -2.16$ ,  $p = .035$ ). These findings remained significant even when ELS was included in the model as a covariate ( $ps = .017$  and  $.031$ , respectively). Findings were not significant for the right UF ( $CDI_{\text{later puberty}}: B = 13.687$ ,  $SE = 10.106$ ,  $t(86) = 1.35$ ,  $p = .179$ ), or the left fornix ( $CDI_{\text{later puberty}}: B = -2.313$ ,  $SE = 12.671$ ,  $t(63) = -0.183$ ,  $p = .856$ ).

#### *Moderation by sex*

Follow-up analyses yielded no significant interactions with sex (all  $|t|s \leq 1.33$ , all  $ps \geq .190$ ).

#### *Sensitivity analyses*

Follow-up analyses supported specificity of the significant findings with FA in the tracts of interest. Specifically, cortisol production during stress recovery was not significantly associated with FA in the corpus callosum major ( $t(49) = 0.31$ ,  $p = .757$ ). Further, FA in the corpus callosum major in early puberty did not significantly predict depressive symptoms in later puberty ( $t(84) = 0.52$ ,  $p = .604$ ).

Additional analyses that included alternate covariates or non-winsorized stress cortisol values also supported robustness of the findings. First, we conducted all analyses including both age and sex as additional covariates. Second, we conducted all analyses using only the breast/testes score, rather than the average of the pubic and breast/testes scores, from the Tanner staging assessment as a covariate. Third, we conducted all analyses using non-winsorized cortisol values. For all three sets of analyses, with one exception, all results remained either statistically significant or nonsignificant relative to the original results. The one finding that differed was no longer significant in all three sets of analyses: ELS did not significantly predict cortisol production post-peak (model including age and sex covariates:  $AUC_{\text{gpost-peak}}: B = -0.069$ ,  $SE = 0.046$ ,  $t(83) = -1.49$ ,  $p = .139$ ; model using only breast/testes score:  $AUC_{\text{gpost-peak}}: B = -0.087$ ,  $SE = 0.047$ ,  $t(85) = -1.85$ ,  $p = .069$ ; model using nonwinsorized cortisol values:  $AUC_{\text{gpost-peak}}: B = -0.099$ ,  $SE = 0.061$ ,  $t(85) = -1.62$ ,  $p = .109$ ).

#### **Discussion**

The goal of the current study was to build on prior research by conducting an integrative examination of ELS, the cortisol stress response, white matter integrity of key frontolimbic tracts, and depressive symptoms during puberty. As predicted, we found in early puberty that higher ELS was associated with decreased cortisol production during the final phase of a psychosocial stress



task. Decreased cortisol production, in turn, was related to increased (rather than decreased, as we had hypothesized) FA in the UF. Further, increased FA in the UF during early puberty predicted higher depressive symptoms in later puberty, above and beyond any prior symptoms. In boys only, higher ELS and decreased cortisol production were associated with increased FA in the fornix. Below, we discuss both hypothesized and unexpected findings within a broader model of ELS, emotion dysregulation, and risk for depression during the transition through puberty.

Results linking ELS to decreased stress cortisol production are consistent with findings of previous studies (reviewed in Bunea et al., 2017). Whereas most prior work focused on childhood maltreatment, our study extends those findings to broadly and dimensionally assessed childhood stress in a community sample of early pubertal youth. Only cortisol production during the final phase of the task, following peak cortisol levels, was significantly associated with ELS; cortisol production at baseline or from baseline to peak was not. Because HPA axis activation to an acute stressor is normative, it may have been more difficult to observe relative decreases in this sample. Further, a meta-analysis of stress cortisol function in adult depression reported that findings for aberrant cortisol production during stress recovery were stronger than those for stress reactivity (Burke, Davis, Otte, & Mohr, 2005). As described below with respect to the associations between cortisol and FA, it is also possible that the reduced post-peak cortisol production indexes a compensatory mechanism in early puberty. In addition, descriptive statistics indicated that there was considerable variability in cortisol levels at their peak. While the results for pre-peak cortisol production were trending in the same direction as for post-peak cortisol production, the greater variability in peak cortisol levels may have made it more difficult to detect significant associations with ELS.

Contrary to predictions, ELS was not directly related to FA in the UF or the fornix. Our prediction of such an association was derived from primarily extreme-group designs, which have examined individuals with significant childhood maltreatment (reviewed in Teicher et al., 2016). While similar mechanisms (e.g., glucocorticoids or inflammatory markers) are likely to explain the effects of ELS on white matter development more generally, there may be some aspects of extremely severe experiences of ELS that noticeably affect or compound the effects of stress on brain circuits (i.e., nutrition). These other factors notwithstanding, we do posit that there is a dose-dependent response of severity of ELS on brain structure that may explain why we observed null associations between ELS and FA in the UF or the fornix. That is, typical variations in ELS, such as those in our community-based sample, may not be severe enough along the continuum of ELS severity to be statistically significantly associated with white matter microstructure during early puberty.

To our surprise, decreased stress cortisol production was related to *increased*, rather than decreased, FA in the UF in early puberty. As we noted, only one study has examined relations between stress cortisol and white matter microstructure. In that study, increased cortisol reactivity was associated with reduced FA, whereas decreased cortisol reactivity was associated with increased FA, in several brain areas not including the UF or the fornix (Sheikh et al., 2014). Thus, it is possible that our findings are complementary with respect to the relation between decreased stress cortisol production and increased FA. Conversely, it is possible that the decreased cortisol production that was associated with increased FA in the UF in the present study indicates

more effective neuroendocrine regulation specific to early puberty in a normative sample such as ours. In a normative sample, consistent with the allostatic load model of stress (McEwen, 1998, 2004), the physiological changes an organism experiences in response to stress may be restorative and produce unsustainable short-term benefits that, over time, lead to long-term adverse consequences. That is, decreased post-peak cortisol production and higher FA in early puberty may reflect compensatory mechanisms that ultimately transition to lower FA over time, given that demyelination occurs in response to prolonged stress exposure.

Increased FA in the UF in early puberty uniquely predicted higher depressive symptoms in later puberty, above and beyond both prior symptoms and severity of ELS. Additional insights concerning this unexpected direction of effect come from the literatures on emotion dysregulation and adolescent depression. Bracht et al.'s (2015) recent review highlighted that studies of adolescent depression have reported both decreased *and* increased FA in the UF, relative to healthy comparison youth. Bracht et al. speculated that increased FA in adolescent depression could be a developmental stage-specific association. Moreover, Aghajani et al. (2014) proposed that increased FA in the UF in adolescent depression may reflect accelerated maturation, given that FA normatively increases from childhood to adulthood (Lebel et al., 2012). Based on this reasoning, it is possible that decreased stress cortisol production in early puberty, which itself is predicted by higher ELS, reflects a neuroendocrine system that has adapted to chronic HPA axis activation, leading to an earlier or accelerated maturation of frontolimbic tracts. Accelerated maturation may prematurely close developmental windows of opportunity for the acquisition of emotion regulation skills (Callaghan & Tottenham, 2016). Given that the current associations between stress cortisol and FA are cross-sectional, follow-up longitudinal analyses are needed to test this hypothesis. Aghajani et al. also suggested that increased FA in the UF in adolescent depression might reflect maladaptively amplified regional function and connectivity in this circuit, which could eventually hamper effective emotion regulation. Clearly, further research is needed to test diffusivity metrics both as vulnerability factors for and as correlates of depression during the transition through puberty and into middle adolescence, in addition to assessing these constructs in high-ELS samples.

Whereas main effects for white matter integrity largely involved the UF, several interaction effects with sex implicated the fornix. Specifically, for boys in early puberty, there were direct associations between higher ELS and increased FA in the fornix, and between decreased stress cortisol production post-peak and increased FA in the fornix. Aberrations in FA in the fornix have been previously reported in relation to ELS, anxiety, and somatization symptoms (Choi et al., 2009), and may reflect dysfunction in affective, motivational, and memory processes that collectively manifest as emotion dysregulation (reviewed in Haber & Knutson 2010; Teicher, Tomoda, & Andersen, 2006). Recent work on neurodevelopment has shown that, between the ages of 8 and 11 years, boys undergo more dramatic maturation of the fornix than do girls (Simmonds, Hallquist, Asato, & Luna, 2014). Thus, sex differences in maturation of the fornix may play a role in our findings. We should note, however, that we matched boys and girls on pubertal stage and controlled for Tanner stage in all analyses, reducing the likelihood that sex differences in pubertal stage influenced these results.

Taken together, the results of this study support a broader model linking ELS, emotion dysregulation, and risk for depression during the transition through puberty. Consistent with

prior population-based work, we found that that higher ELS was associated concurrently with depressive symptoms (McLaughlin et al., 2012), but did not predict depressive symptoms in later puberty above and beyond prior symptoms. Rather, analyses indicated that ELS predicted stress cortisol production, stress cortisol production was associated with white matter integrity, and white matter integrity predicted changes in depressive symptoms. Conceptually, these results broadly support a model in which frontolimbic circuits implicated in the control of HPA axis function serve as a mediator or “common pathway” through which ELS potentiates risk for emotion dysregulation (reviewed in Lupien et al., 2009). Whereas in the present study most measures were assessed concurrently and formal mediation was not tested, future interdisciplinary research should focus on mediation in large-scale, longitudinal samples. Further, given that ELS has been associated with various maladaptive emotion regulation strategies that are risk factors for depression (e.g., rumination; O’Mahen, Karl, Moberly, & Fedock, 2015), future studies should integrate assessments of affective processes with neuroendocrine and frontolimbic function. Finally, multiple other potential variables may influence the emergence of depressive symptoms during puberty (e.g., sex hormones), and could be incorporated in future multimodal research.

While the integrative approach of this study is a significant strength, there are several limitations that warrant discussion. First, subsets of participants were missing data on each variable of interest, reducing statistical power. The presence of missing data was primarily due to the fact that only half of participants completed the psychosocial stress task, along with typical constraints such as the usability of diffusion MRI data with youth. However, our overall sample size was relatively large, there were no significant differences between participants with versus without missing data on any variable of interest, and analyses utilized all available cases for each regression model. Nevertheless, future studies with larger samples are warranted. Second, we used Tanner staging as a self-report measure of pubertal stage to decrease participant burden. Although this measure is reliably correlated with physician assessment (e.g., Desmangles, Lappe, Lipaczewski, & Haynatzki, 2006), future work should examine hormonal measures of pubertal development in a more fine-grained manner. Third, although the use of a community sample increases generalizability to typical variations in the constructs of interest, it may decrease effect sizes and the ability to detect significant effects. For example, our sample provided less variability in depressive symptoms than a clinically referred sample would provide. Fourth, links among ELS, stress cortisol production, and white matter integrity were cross-sectional in early puberty, precluding causal inferences and the ability to elucidate order or timing of effects. Future studies should use a prospective approach, beginning in earlier childhood, to gain an understanding of neurobiological mediation. In particular, research might focus on how chronic or elevated ELS involving sustained HPA axis activation prospectively influences structure and function of the amygdala, prefrontal cortex, and hippocampus. Further research should also incorporate a molecular level of analysis to gain insights into mediating mechanisms.

In sum, we bring together several distinct levels of analysis, for the first time, to provide an integrative approach to the study of stress, neurodevelopment, and depressive symptomatology. Our findings suggest important links among childhood experience, neuroendocrine function, and brain connectivity that may have implications for emotion dysregulation and the development of

depression during puberty. Our results also underscore the need to consider white matter alterations in youth within a developmental psychopathology framework of deviations from normative maturational processes. Future work is necessary to inform the development of targeted assessment and intervention strategies in youth exposed to ELS in order to mitigate risk for depression.

**Acknowledgments.** We thank Monica Ellwood-Lowe, M. Catalina Camacho, Sophie Schouboe, Alexandria Price, Holly Pham, and Anna Cichocki for their help with data collection, and M. Catalina Camacho for her work conducting quality checks of the MRI data.

**Author contributions.** The first two authors, Katharina Kircanski and Lucinda M. Sisk, contributed equally to the article.

**Financial support.** This research was supported by National Institutes of Health Grants R37-MH101495, F32-MH096385, F32-MH107129, F32-MH114317, K01-MH106805, and K01-MH117442; the Brain and Behavior Research Foundation, Young Investigator Awards 20814, 23582, and 23819; the National Science Foundation; the Klingenstein Third Generation Foundation; the Jacobs Foundation; and the Stanford Precision Health and Integrated Diagnostics Center. The funding agencies played no role in the preparation of this article. The content is solely the responsibility of the authors and does not necessarily represent the official views of the National Institutes of Health.

## References

- Adrian, M., Zeman, J., & Veits, G. (2011). Methodological implications of the affect revolution: A 35-year review of emotion regulation assessment in children. *Journal of Experimental Child Psychology*, 110, 171–197. doi:10.1016/j.jecp.2011.03.009
- Aghajani, M., Veer, I. M., Van Lang, N. D. J., Meens, P. H. F., Van Den Bulk, B. G., Rombouts, S. A. R. B., ... Van Der Wee, N. J. (2014). Altered white-matter architecture in treatment-naïve adolescents with clinical depression. *Psychological Medicine*, 44, 2287–2298. doi:10.1017/S0033291713003000
- Alink, L. R. A., Cicchetti, D., Kim, J., & Rogosch, F. A. (2012). Longitudinal associations among child maltreatment, social functioning, and cortisol regulation. *Developmental Psychology*, 48, 224–236. doi:10.1037/a0024892
- Basser, P. J., Pajevic, S., Pierpaoli, C., Duda, J., & Aldroubi, A. (2000). In vivo fiber tractography using DT-MRI data. *Magnetic Resonance in Medicine*, 141, C4014005. doi:10.1061/(ASCE)EL1943-5541.0000225
- Beauchaine, T. P. (2015). Future directions in emotion dysregulation and youth psychopathology. *Journal of Clinical Child and Adolescent Psychology*, 44, 875–896. doi:10.1080/15374416.2015.1038827
- Beauchaine, T. P., & Gatzke-Kopp, L. M. (2012). Instantiating the multiple levels of analysis perspective in a program of study on externalizing behavior. *Development and Psychopathology*, 24, 1003–1018. doi:10.1017/S0954579412000508
- Bracht, T., Linden, D., & Keedwell, P. (2015). A review of white matter microstructure alterations of pathways of the reward circuit in depression. *Journal of Affective Disorders*, 187, 45–53. doi:10.1016/j.jad.2015.06.041
- Bunea, I. M., Szentágotai-Táti, A., & Miu, A. C. (2017). Early-life adversity and cortisol response to social stress: A meta-analysis. *Translational Psychiatry*, 7, 1274. doi:10.1038/s41398-017-0032-3
- Burke, H. M., Davis, M. C., Otte, C., & Mohr, D. C. (2005). Depression and cortisol responses to psychological stress: A meta-analysis. *Psychoneuroendocrinology*, 30, 846–856. doi:10.1016/j.psyneuen.2005.02.010
- Callaghan, B. L., & Tottenham, N. (2016). The stress acceleration hypothesis: Effects of early-life adversity on emotion circuits and behavior. *Current Opinion in Behavioral Sciences*, 7, 76–81. doi:10.1016/j.cobeha.2015.11.018
- Choi, J., Jeong, B., Rohan, M. L., Polcari, A. M., & Teicher, M. H. (2009). Preliminary evidence for white matter tract abnormalities in young adults exposed to parental verbal abuse. *Biological Psychiatry*, 65, 227–234. doi:10.1016/j.biopsych.2008.06.022
- Cicchetti, D., Rogosch, F. A., Gunnar, M. R., & Toth, S. L. (2010). The differential impacts of early physical and sexual abuse and internalizing problems

- on daytime cortisol rhythm in school-aged children. *Child Development*, 81, 252–269. doi:10.1111/j.1467-8624.2009.01393.x
- Coleman, L., & Coleman, J. (2002). The measurement of puberty: A review. *Journal of Adolescence*, 25, 535–550. doi:10.1207/S15327949PAC0804\_03
- Colich, N. L., Kircanski, K., Foland-Ross, L. C., & Gotlib, I. H. (2015). HPA-axis reactivity interacts with stage of pubertal development to predict the onset of depression. *Psychoneuroendocrinology*, 55, 94–101.
- Colich, N. L., Williams, E. S., Ho, T. C., King, L. S., Humphreys, K. L., Price, A. N., Ordaz, S. J., & Gotlib, I. H. (2017). The association between early life stress and prefrontal cortex activation during implicit emotion regulation is moderated by sex in early adolescence. *Development and Psychopathology*, 29, 1851–1864.
- Conturo, T. E., Lori, N. F., Cull, T. S., Akbudak, E., Snyder, A. Z., Shimony, J. S., ... Raichle, M. E. (1999). Tracking neuronal fiber pathways in the living human brain. *Applied Physical Sciences: Neurobiology*, 96, 10422–10427. doi:10.1073/pnas.96.18.10422
- Dahl, R. E. (2001). Affect regulation, brain development, and behavioral/emotional health in adolescence. *CNS Spectrums*, 6, 60–72. doi:10.1017/S1092852900022884
- Dannowski, U., Stuhmann, A., Beutelmann, V., Zwanzger, P., Lenzen, T., Grotegerd, D., ... Kugel, H. (2012). Limbic scars: Long-term consequences of childhood maltreatment revealed by functional and structural magnetic resonance imaging. *Biological Psychiatry*, 71, 286–293. doi:10.1016/j.biopsych.2011.10.021
- DePasquale, C. E., Donzella, B., & Gunnar, M. R. (in press). Pubertal recalibration of cortisol reactivity following early life stress: A cross-sectional analysis. *Journal of Child Psychology and Psychiatry*. doi:10.1111/jcpp.12992
- Desmangles, J. C., Lappe, J. M., Lipaczewski, G., & Haynatzki, G. (2006). Accuracy of pubertal Tanner staging self-reporting. *Journal of Pediatric Endocrinology and Metabolism*, 19, 213–222. doi:10.1515/JPEM.2006.19.3.213
- Destrieux, C., Fischl, B., Dale, A., & Halgren, E. (2010). Automatic parcellation of human cortical gyri and sulci using standard anatomical nomenclature. *NeuroImage*, 53, 1–15. doi:10.1016/j.neuroimage.2010.06.010
- Doom, J. R., & Gunnar, M. R. (2013). Stress physiology and developmental psychopathology: Past, present and future. *Development and Psychopathology*, 25, 1359–1373. doi:10.1017/S0954579413000667
- Eluvathingal, T. J. (2006). Abnormal brain connectivity in children after early severe socioemotional deprivation: A diffusion tensor imaging study. *Pediatrics*, 117, 2093–2100. doi:10.1542/peds.2005-1727
- Fischl, B., Salat, D. H., Van Der Kouwe, A. J. W., Makris, N., Ségonne, F., Quinn, B. T., & Dale, A. M. (2004). Sequence-independent segmentation of magnetic resonance images. *NeuroImage*, 23, 69–84. doi:10.1016/j.neuroimage.2004.07.016
- Fries, E., Hesse, J., Hellhammer, J., & Hellhammer, D. H. (2005). A new view on hypocortisolism. *Psychoneuroendocrinology*, 30, 1010–1016. doi:10.1016/j.psyneuen.2005.04.006
- Fuhrmann, D., Knoll, L. J., & Blakemore, S. J. (2015). Adolescence as a sensitive period of brain development. *Trends in Cognitive Sciences*, 19, 558–566. doi:10.1016/j.tics.2015.07.008
- Green, J. G., McLaughlin, K. A., Berglund, P. A., Gruber, M. J., Sampson, N. A., Zaslavsky, A. M., & Kessler, R. C. (2010). Childhood adversities and adult psychiatric disorders in the national comorbidity survey replication I. *American Medical Association*, 67, 113–123. doi:10.1001/archgenpsychiatry.2009.186
- Haber, S. N., & Knutson, B. (2010). The reward circuit: Linking primate anatomy and human imaging. *Neuropsychopharmacology*, 35, 4–26. doi:10.1038/npp.2009.129
- Hanson, J. L., Adluru, N., Chung, M. K., Alexander, A. L., Davidson, R. J., & Pollak, S. D. (2013). Early neglect is associated with alterations in white matter integrity and cognitive functioning. *Child Development*, 84, 1566–1578. doi:10.1111/cdev.12069
- Hanson, J. L., Knodt, A. R., Brigidi, B. D., & Hariri, A. R. (2015). Lower structural integrity of the uncinate fasciculus is associated with a history of child maltreatment and future psychological vulnerability to stress. *Development and Psychopathology*, 27, 1611–1619. doi:10.1017/S0954579415000978
- Hanson, J. L., Nacewicz, B. M., Sutterer, M. J., Cayo, A. A., Schaefer, S. M., Rudolph, K. D., ... Davidson, R. J. (2015). Behavioral problems after early life stress: Contributions of the hippocampus and amygdala. *Biological Psychiatry*, 77, 314–323. doi:10.1016/j.biopsych.2014.04.020
- Harkness, K. L., Stewart, J. G., & Wynne-Edwards, K. E. (2011). Cortisol reactivity to social stress in adolescents: Role of depression severity and child maltreatment. *Psychoneuroendocrinology*, 36, 173–181. doi:10.1016/j.psyneuen.2010.07.006
- Ho, T. C., King, L. S., Leong, J. K., Colich, N. L., Humphreys, K. L., Ordaz, S. J., & Gotlib, I. H. (2017). Effects of sensitivity to life stress on uncinate fasciculus segments in early adolescence. *Social Cognitive and Affective Neuroscience*, 12, 1460–1469. doi:10.1093/scan/nsx065
- Hua, K., Zhang, J., Wakana, S., Jiang, H., Li, X., Reich, D. S., ... Mori, S. (2008). Tract probability maps in stereotaxic spaces: Analyses of white matter anatomy and tract-specific quantification. *NeuroImage*, 39, 336–347. doi:10.1371/journal.pone.0128887
- Huang, H., Gundapuneedi, T., & Rao, U. (2012). White matter disruptions in adolescents exposed to childhood maltreatment and vulnerability to psychopathology. *Neuropsychopharmacology*, 37, 2693–2701. doi:10.1038/npp.2012.133
- Kessler, R. C. (2003). Epidemiology of women and depression. *Journal of Affective Disorders*, 74, 5–13. doi:10.1016/S0165-0327(02)00426-3
- King, L. S., Colich, N. L., LeMoult, J., Humphreys, K. L., Ordaz, S. J., Price, A. N., & Gotlib, I. H. (2017). The impact of the severity of early life stress on diurnal cortisol: The role of puberty. *Psychoneuroendocrinology*, 77, 68–74. doi:10.1016/j.psyneuen.2016.11.024
- Kirschbaum, C., Pirke, K.-M., & Hellhammer, D. H. (1993). The Trier Social Stress Test—A tool for investigating psychobiological stress responses in a laboratory setting. *Neuropsychobiology*, 28, 76–81.
- Koss, K. J., & Gunnar, M. R. (2018). Annual Research Review: Early adversity, the hypothalamic-pituitary-adrenocortical axis, and child psychopathology. *Journal of Child Psychology and Psychiatry and Allied Disciplines*, 4, 327–346. doi:10.1111/jcpp.12784
- Kovacs, M. (1985). The Children's Depression Inventory (CDI). *Psychopharmacological Bulletin*, 21, 995–998.
- Kovacs, M. (1992). *The Children's Depression Inventory (CDI)*. Toronto, ON: Multi-Health Systems.
- Kwong, A. S., Manley, D., Timpson, N. J., Pearson, R. M., Heron, J., Sallis, H., ... Leckie, G. (in press). Identifying critical points of trajectories of depressive symptoms from childhood to young adulthood. *Journal of Youth and Adolescence*. doi:10.1007/s10964-018-0976-5
- Lebel, C., Gee, M., Camicioli, R., Wieler, M., Martin, W., & Beaulieu, C. (2012). Diffusion tensor imaging of white matter tract evolution over the lifespan. *NeuroImage*, 60, 340–352. doi:10.1016/j.neuroimage.2011.11.094
- Leong, J. K., MacNiven, K. H., Samanez-Larkin, G. R., & Knutson, B. (2018). Distinct neural circuits support incentivized inhibition. *NeuroImage*, 178, 435–444. doi:10.1016/j.neuroimage.2018.05.055
- Leong, J., Pestilli, F., Wu, C., Samanez-Larkin, G., & Knutson, B. (2016). White-matter tract connecting anterior insula to nucleus accumbens correlates with reduced preference for positively skewed gambles. *Neuron*, 89, 63–69. doi:10.1161/CIRCULATIONAHA.114.010270
- Lewinn, K. Z., Connolly, C. G., Wu, J., Drahos, M., Hoeft, F., Ho, T. C., ... Yang, T. T. (2014). White matter correlates of adolescent depression: Structural evidence for frontolimbic disconnectivity. *Journal of the American Academy of Child & Adolescent Psychiatry*, 53, 899–909. doi:10.1016/j.jaac.2014.04.021
- Lupien, S. J., McEwen, B. S., Gunnar, M. R., & Heim, C. M. (2009). Effects of stress throughout the lifespan on the brain and behavior. In D. W. Pfaff (Ed.), *Hormones, brain and behavior* (3rd ed., pp. 434–445). San Diego, CA: Academic Press.
- Marshall, W. A., & Tanner, J. M. (1968). Growth and physiological development during adolescence. *Annual Review of Medicine*, 19, 283–300.
- McEwen, B. S. (1998). Stress, adaptation, and disease: Allostasis and allostatic load. *Annals of the New York Academy of Sciences*, 840, 33–44.
- McEwen, B. S. (2004). Protection and damage from acute and chronic stress. *Annals of the New York Academy of Sciences*, 1032, 1–7.
- McEwen, B. S., & Milner, T. (2007). Hippocampal formation: Shedding light on the influence of sex and stress on the brain. *Brain Research Review*, 55, 343–355.



- McLaughlin, K. A., Green, J. G., Gruber, M. J., Sampson, N. A., Zaslavsky, A. M., & Kessler, R. C. (2012). Childhood adversities and first onset of psychiatric disorders in a national sample of US adolescents. *Archives of General Psychiatry*, 69, 1151–1160. doi:10.1001/archgenpsychiatry.2011.2277
- Messman-Moore, T. L., & Bhuptani, P. H. (2017). A review of the long-term impact of child maltreatment on posttraumatic stress disorder and its comorbidities: An emotion dysregulation perspective. *Clinical Psychology Science and Practice*, 24, 154–169. doi:10.1111/cpsp.12193
- Morris, M. C., Kouros, C. D., Mielock, A. S., & Rao, U. (2017). Depressive symptom composites associated with cortisol stress reactivity in adolescents. *Journal of Affective Disorders*, 210, 181–188. doi:10.1016/j.jad.2016.12.023
- Negriff, S., & Susman, E. J. (2011). Pubertal timing, depression, and externalizing problems: A framework, review, and examination of gender differences. *Journal of Research on Adolescence*, 21, 717–746. doi:10.1111/j.1532-7795.2010.00708.x
- Olson, I. R., Von der Heide, R. J., Alm, K. H., & Vyas, G. (2015). Development of the uncinate fasciculus: Implications for theory and developmental disorders. *Developmental Cognitive Neuroscience*, 14, 50–61. doi:10.1016/j.dcn.2015.06.003
- O'Mahen, H. A., Karl, A., Moberly, N., & Fedock, G. (2015). The association between childhood maltreatment and emotion regulation: Two different mechanisms contributing to depression? *Journal of Affective Disorders*, 174, 287–295. doi:10.1016/j.jad.2014.11.028
- Ordaz, S. J., & Luna, B. (2012). Sex differences in physiological reactivity to acute psychosocial stress in adolescence. *Psychoneuroendocrinology*, 37, 1135–1157. doi:10.1016/j.psyneuen.2012.01.002
- Palacios-Barrios, E. E., & Hanson, J. (2019). Poverty and self-regulation: Integrating psychosocial processes and neurobiology to understand risk for psychopathology. *Comprehensive Psychiatry*, 90, 52–64. doi:10.1016/j.comppsy.2018.12.012
- Powell, D. J., & Schlotz, W. (2012). Daily life stress and the cortisol awakening response: testing the anticipation hypothesis. *PLOS ONE*, 7. doi:10.1371/journal.pone.0052067
- Pruessner, J. C., Kirschbaum, C., Meinlschmid, G., & Hellhammer, D. H. (2003). Two formulas for computation of the area under the curve represent measures of total hormone concentration versus time-dependent change. *Psychoneuroendocrinology*, 28, 916–931. doi:10.1016/S0306-4530(02)00108-7
- Quevedo, K., Johnson, A., Loman, M., Laffavor, T., & Gunnar, M. (2012). The confluence of adverse early experience and puberty on the cortisol awakening response. *International Journal of Behavioral Development*, 36, 19–28. doi:10.1177/0165025411406860
- Rao, U., Hammen, C., Ortiz, L. R., Chen, L. A., & Poland, R. E. (2008). Effects of early and recent adverse experiences on adrenal response to psychosocial stress in depressed adolescents. *Biological Psychiatry*, 64, 521–526. doi:10.1016/j.biopsych.2008.05.012
- Raymond, C., Marin, M. F., Majeur, D., & Lupien, S. (2018). Early child adversity and psychopathology in adulthood: HPA axis and cognitive dysregulations as potential mechanisms. *Progress in Neuro-Psychopharmacology and Biological Psychiatry*, 85, 152–160. doi:10.1016/j.pnpbp.2017.07.015
- R Core Team. (2017). R: A language and environment for statistical computing. Vienna, Austria: R Foundation for Statistical Computing. <https://www.R-project.org>
- Ribbe, D. (1996). Psychometric review of Traumatic Event Screening Instrument for Children (TESI-C). In B. H. Stamm (Ed.), *Measurement of stress, trauma, and adaptation* (pp. 386–387). Lutherville, MD: Sidran Press.
- Rohde, G. K., Barnett, A. S., Basser, P. J., Marenco, S., & Pierpaoli, C. (2004). Comprehensive approach for correction of motion and distortion in diffusion-weighted MRI. *Magnetic Resonance in Medicine*, 51, 103–114. doi:10.1002/mrm.10677
- Romeo, R. D. (2010). Adolescence: A central event in shaping stress reactivity. *Developmental Psychobiology*, 52, 244–253. doi:10.1002/dev.20437
- Romeo, R. D., & McEwen, B. S. (2006). Stress and the adolescent brain. *Annals of the New York Academy of Sciences*, 1094, 202–214. doi:10.1196/annals.1376.022
- Rudolph, K. D., Hammen, C., Burge, D., Lindberg, N., Herzberg, D., & Daley, S. E. (2000). Toward an interpersonal life-stress model of depression: The developmental context of stress generation. *Development and Psychopathology*, 12, 215–234
- Sheikh, H. I., Joannisse, M. F., Mackrell, S. M., Kryski, K. R., Smith, H. J., Singh, S. M., & Hayden, E. P. (2014). Links between white matter microstructure and cortisol reactivity to stress in early childhood: Evidence for moderation by parenting. *NeuroImage: Clinical*, 6, 77–85. doi:10.1016/j.nicl.2014.08.013
- Shirtcliff, E. A., Dahl, R. E., & Pollak, S. D. (2009). Pubertal development: Correspondence between hormonal and physical development. *Child Development*, 80, 327–337. doi:10.1111/j.1467-8624.2009.01263.x
- Simmonds, D. J., Hallquist, M. N., Asato, M., & Luna, B. (2014). Developmental stages and sex differences of white matter and behavioral development through adolescence: A longitudinal diffusion tensor imaging (DTI) study. *Neuroimage*, 92, 356–368. doi:10.1038/jid.2014.371
- Stalder, T., Kirschbaum, C., Kudielka, B. M., Adam, E. K., Pruessner, J. C., Wüst, S., ... Clow, A. (2016). Assessment of the cortisol awakening response: Expert consensus guidelines. *Psychoneuroendocrinology*, 63, 414–432. doi:10.1016/j.psyneuen.2015.10.010
- Teicher, M. H., Samson, J. A., Anderson, C. M., & Ohashi, K. (2016). The effects of childhood maltreatment on brain structure, function and connectivity. *Nature Reviews Neuroscience*, 17, 652–666. doi:10.1038/nrn.2016.111
- Teicher, M. H., Tomoda, A., & Andersen, S. E. (2006). Neurobiological consequences of early stress and childhood maltreatment: Are results from human and animal studies comparable? *Annals of the New York Academy of Sciences*, 1071, 313–323. doi:10.1196/annals.1364.024
- Tournier, J. D., Calamante, F., & Connelly, A. (2007). Robust determination of the fibre orientation distribution in diffusion MRI: Non-negativity constrained super-resolved spherical deconvolution. *NeuroImage*, 35, 1459–1472. doi:10.1016/j.neuroimage.2007.02.016
- Trickett, P. K., Gordis, E., Peckins, M. K., & Susman, E. J. (2014). Stress reactivity in maltreated and comparison male and female young adolescents. *Child Maltreatment*, 19, 27–37. doi:10.1177/1077559513520466
- Ursache, A., Noble, K., & Blair, C. (2015). Socioeconomic status, subjective social status, and perceived stress: Associations with stress physiology and executive functioning. *Journal of Behavioral Medicine*, 41, 145–154. doi:10.1161/CIRCULATIONAHA.114.010270
- Wakana, S., Jiang, H., & van Zijl, P. C. M. (2004). Fiber tract-based atlas of human white matter anatomy. *Radiology*, 230, 77–87. doi:10.1148/radiol.2301021640
- Yeatman, J. D., Dougherty, R. F., Myall, N. J., Wandell, B. A., & Feldman, H. M. (2012). Tract profiles of white matter properties: Automating fiber-tract quantification. *PLOS ONE*, 7. doi:10.1371/journal.pone.0049790
- Zhang, W., Olivi, A., Hertig, S. J., van Zijl, P., & Mori, S. (2008). Automated fiber tracking of human brain white matter using diffusion tensor imaging. *NeuroImage*, 42, 771–777. doi:10.1016/j.neuroimage.2008.04.241